



NEWINGTON
LONDON

3 Bedrooms

Apartment

Located in London

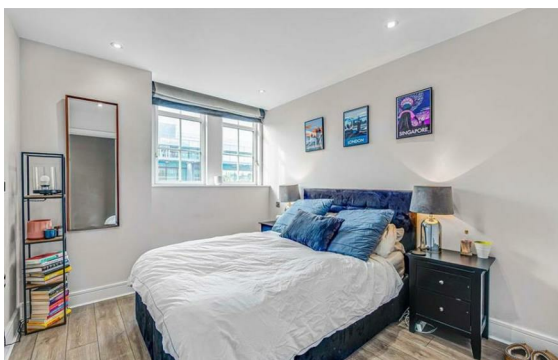
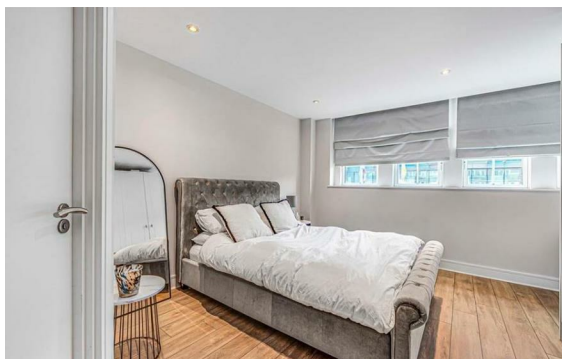
£1,500 Per Month



info@newingtonstates.com

<http://www.newingtonstates.com>

020 7724 2233



NEWINGTON

LONDON

60 Upper Montagu Street

London

W1H 1SN

020 7724 2233

info@newingtonstates.com

A modern three-bedroom apartment on the sixth floor (with lift) of a popular residential block, featuring a private terrace with stunning city views. The apartment offers a spacious reception room with direct access to the terrace, a separate kitchen, three double bedrooms (one en-suite), and a family bathroom.

The building benefits from a 24-hour porter and is ideally located on Marylebone Road, close to Baker Street, Marylebone Village, Regent's Park, and excellent transport links including Baker Street Underground and Marylebone Station.

EPC rating: D

Energy Efficiency Rating: D

Agents Note: Whilst every care has been taken to prepare these particulars, they are for guidance purposes only. All measurements are approximate and are for general guidance purposes only and whilst every care has been taken to ensure their accuracy, they should not be relied upon and potential buyers/tenants are advised to recheck the measurements.

<http://www.newingtonstates.com>